

GWRRA



WA-E

September 2011

Gold Wing Road Riders Association Region I - WA District



"Friends for Fun, Safety and Knowledge"



Next Meeting: October 15, 2011

Crystal Creek Café

22620 Bothell-Everett Hwy.

Bothell, WA. 98021



September - We found the SUN !!

As we move into September, we actually saw summer begin. The last couple of weeks both in August and now in September have been gorgeous. We have had some great rides over the last couple of weeks and now we are reminded of why we live here in this area. Absolutely, fabulous weather, not too hot, not too cold, just right. We have a lot for Chapter E on the plate for the month of September. First, there will not be a Chapter Meeting on the 17th, as most of the chapter will be headed up to Whistler for our Canadian retreat. We are planning on riding up thru the City of Hope on Hwy 1 and then take the scenic ride up to Lillooet and take Hwy 99 into Whistler. This will be a long day ride, but it is some very beautiful country to ride in. We will be staying at Whistler from the 16th to the 19th. I am really looking forward to this ride and I know that many of the chapter people love hanging out in Whistler with all that the village has to offer. We are also down to our last two Thursday socials. The one on the 1st will be held at the Pizza Bank on 124th in Kirkland, then on the 8th we will be doing the Canyons in Bothell. These will be at 6PM. The Canyons restaurant will also be doing a charity drive for a soul lost in Afghanistan with 20% of the proceeds going to the fund. Also on the 11th is the **'Ride for Kids' held at Remlinger Farms** in Carnation. This is a worthy event and we would like to have a big showing for our chapter. Even if you cannot go to the event, please help by sending your donation to them. Information can be found at their website noted below:

<http://www.pbtfus.org/rideforkids/events/2011/pugetsound.html>

We will also be starting our Winter Dinner socials this month. Bill and Caryl Estes are the Dinner Social coordinators and will be keeping us functionally social during the winter season. This starts on the 22nd, and I hear our first place will be the CoHo Café in Redmond. This is a great place to eat and have fun, so come down and join us for our 1st one of the Winter season.

There are also some other things going on within other GWRRA chapters in the month of September. There is the Idaho District Rally over the Labor Day weekend in Kamiah, I D. Great roads surround this, so if you are looking to get out and ride, this may be a great destination for you to go. Also, there is the WA-Y Riddler run in Enumclaw on the 10th. **This is the annual fundraiser for this chapter. Let's put on a good show and go down and support this chapter.** On the 17-18th is the WA-P Oyster Feed in Long Beach. We went to this event last year and man what a blast. Camping, walking the beach, eating Oysters, who could ask for anything better. Then finally, a non-GWRRA event which is the 25th Annual Anacortes Oyster Run. Lots of bikes of all kinds and variety. We will be putting this together at the end of the month for a trip up to see it all. Lots of vendors, oysters, the works. **We hope you can make it... As you can see there is still plenty to do and see in the month of September and we hope the weather will cooperate a bit more, since we got a late start.**

Remember, if you see something that you think the Chapter would like to do and/or see, please feel free to let us know. We encourage your comments. Are we doing a good job as your chapter directors? What can we do better? We would be happy to take any and **all ideas and suggestions to 'our' chapter membership to see if this is something we can** all do as a group. This is YOUR Chapter, so please send all of your suggestions along and we will see what we can do to incorporate those into our Chapter gathering and events.

Till next month— Rollin, Rollin, Rollin..
John & Barb



This is the new award recognition!



“Captain” Ron Urghart is the latest recipient of the Eagle Oops award, if you were not present at the August meeting, perhaps Ron can enlighten you on how he earned this prestigious award when you next see him!

The Eagle Oops Award

August Birthday Folks



Sue Sigyarto and Bob Spencer



September Birthdays

John Smith	10
Tanya Caldwell	15
Lana Jo Peck	20



September Anniversaries

Mark & Tanya Caldwell	9
Jim & Carolyn Wartchow	17

If we have missed any announcement, birthday or anniversary please email Ernie Sigyarto or Barb & John with dates, names and information. If you have pictures and/or stories, please attach them to your email.

© Cares & Concerns: Please remember to inform Ernie & Sue Sigyarto of any cares or concerns you may have or if you are aware of other members in need of support. If someone is ill or incapacitated or simply is in need of a friendly hug or support, please let us know. We really do want to know if you are OK or in need of anything.

John & Barb Smith @ allabout@frontier.com

Ernie & Sue Sigyarto @ enssigyarto@frontier.com



Special Reminder: Don't forget to look for your membership number hidden somewhere in our newsletter.

If you find your number, this could mean \$ for you if you tell us at the Chapter E meeting of the month of the newsletter.

We encourage you to identify yourself at the meeting.



If you have pictures to add to the Chapter E Website please email Ron Peck, Chapter E Webmaster



Rider Education



Peer Pressure Is Easy - You Aren't We don't argue with ourselves enough

By: James R. Davis

All experienced group riders know that each individual in the group is responsible for their own safety. They know that in every group, one of them has the least experience or skill/control. Generally, they know that the group should ride to the skills of the least common denominator - the least experienced, or least skilled/controlled.

But sometimes you join a group for a ride and many if not all of them are strangers. Sometimes a new member joins your group and you have no idea what their skill level or experience might be. This should be a serious concern to the lead bike (often called the Road Captain - though not necessarily so.)

Since it's up to the lead bike to set the pace, how can that be done without knowing what the least common denominator is? Clearly this is an argument for a pre-ride meeting and some questions designed to find out as much as you can about who you are riding with.

But realities are such that even if you try to find out who has the least experience or least skill/control, the odds are that you will have trouble doing so. People have 'face', after all. People are reluctant to be seen as the weakest of the group. Worse, and we have seen tragic results of this recently, some people honestly believe they have better skills/control than they really do and are quite convincing about it with others.

From a lead bike point of view, a solution is readily at hand - always place a new member of the group in the last right-track position (sometimes called the 'slot') in front of the drag bike and have the drag bike observe how that person actually rides. Once the drag bike advises the lead bike that the new person demonstrates adequate skill/control then that person is freed to ride anywhere they want to in the group. Until everybody in the group is at least seen to have reasonable skills/control while riding with the group, the lead bike has no business pushing any limits.

But the heading of this message regards peer pressure, and I would like to talk briefly about group dynamics that are dangerous precisely because of peer pressure. Even assuming that everyone in a group is well known to each other, there is still a least experienced, least skilled/controlled person there. That person usually feels that he/she has very little choice but to try to 'keep up', to try to not hold the rest of the group back. If nothing else, they often think that 'stretching' themselves is a learning experience.

And while it is definitely a learning experience, if you survive it, 'keeping up', or not holding the rest of the group back should NOT be part of the equation!! A brave person will acknowledge their weaknesses and not push the envelope aggressively, even if it means that the rest of the group will recognize those weaknesses. A smart person believes absolutely that THEY are responsible for their own ride/safety - and not incidentally, in not being a potential hazard to anyone else. These people ignore peer pressure to the point that they might not fit into a particular group - and that's just fine for all concerned!

But peer pressure is NOT the real danger - there is always peer pressure (sometimes thoughtless, sometimes just good natured competition, sometimes no more than shared courtesy.) It is YOUR OWN PERSONAL pressure to perform that can be dangerous. I call that your 'head'.

What I'm getting at is mental 'rightness' - being ready and prepared to do what you are about to do, and knowing it.

If your head is not 'right', STOP and get it 'right' before you go another two feet on your motorcycle!!!!

After more than 30 years of riding motorcycles there are times when I simply feel that I cannot safely do something that I have done a thousand times before - sometimes the most trivial of things. For example, a few years ago I was on a tour to Tulsa, Oklahoma and our group had just finished a pit stop and were on our way back onto the road. We were on a parking lot that had a driveway with a relatively severe dip in it as it joined the main road where we then had to make a hard right turn to get underway. All the bikes ahead of me did just fine with that dip. But when it was my turn to negotiate that driveway I decided that my head was not 'right' and stopped my bike. I radioed to the lead bike that I would catch up in a moment, nothing was wrong. One minute later my head was 'right', confidence restored, and I took off and joined the group. Trivial embarrassment is nothing compared to an accident.

There is no doubt in my mind at all (NOW) that I could have made that exit from the parking lot without a problem. But this is one experienced rider that is not ashamed to say that when my head is 'wrong', I stop and wait until it gets 'right'.

Peer pressure is easy - you aren't.

Copyright © 1992 - 2011 by The Master Strategy Group, all rights reserved.



And remember: Drive on the right except to pass...

STICK-ON LIGHTS



Here's a product that is great for lighting the inside of your Goldwing trunk or pull-behind trailer for those moments that you **need to see in those areas and don't want to be encumbered by holding a flashlight at the same time.** The Stick N Click™ LED lights are very easy to install and the cost is low. You simply pull off the protective paper backing from the adhesive and then press the light into place on the inside of a trunk lid or the inside cover of your trailer. To use, simply push on the center of the light and it clicks on. The batteries are rated for about 100 hours of use. A 3-pack of these LED lights sells for \$10 or less and can be found at Amazon.com as well as many local hardware and drug stores.

New Rig

Jimm Burk has shared a picture of his new rig that he and Linda will soon be riding. He has promised to show it off at the dinner social coming up at Canyon's in Bothell on 8 September. Can't wait to see this beauty !



What a Great Idea !

Recently spotted at the Edmonds ferry terminal was a rider with a route map attached to the back of his jacket. His co-rider was able to see the route that they were taking and to help guide him during the ride.

HOOD CANAL RI DE REPORT

By: Gordon Bousman

We had a great group ride around the Hood Canal following the August 20th chapter meeting. Leader Bob led nine bikes on a gorgeous 140 mile ride with perfect weather. We took the ferry from Edmonds to Kingston and then drove south past Bremerton and then clockwise around the Hood Canal. We were held up briefly at the opened Hood canal bridge while a couple of navy cargo supply ships passed and then we stopped at Mikes BBQ in Port Gamble for a scrumptious early dinner of some of the best BBQ on the planet. Taking the ferry back from Kingston to Edmonds, we witnessed a parade of cruise ships heading north from Seattle.



Starbucks rest stop



Bikes taking a rest



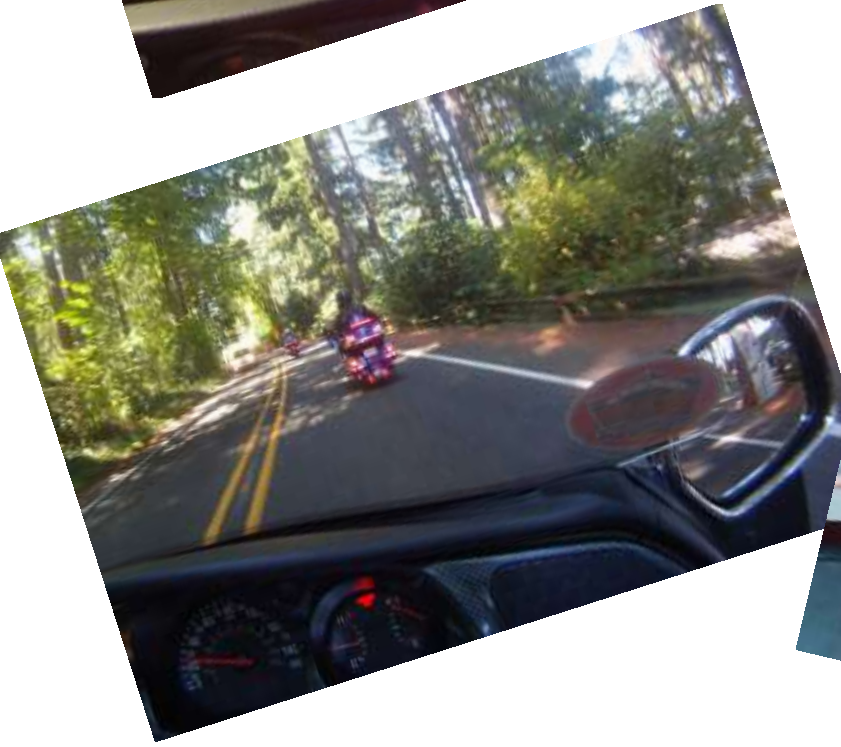
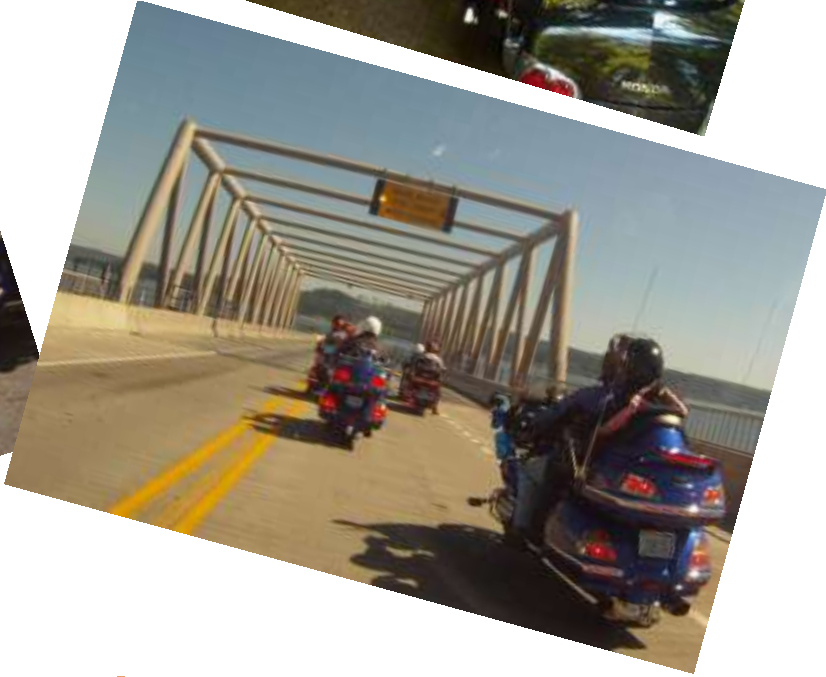
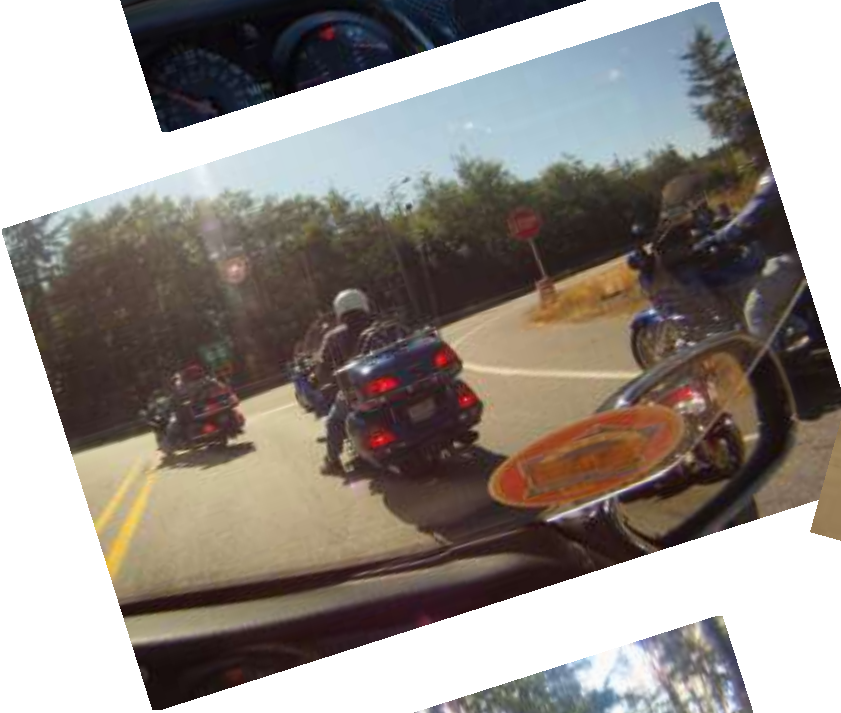
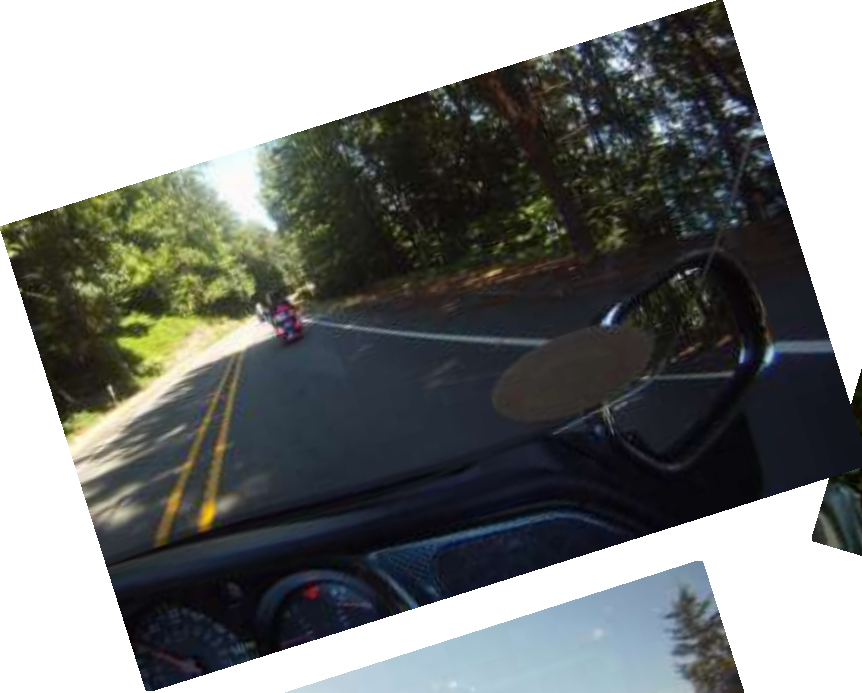
Running north along Hood Canal on 101



Running north along Hood Canal on 101



SEPTEMBER, 2011





Some rowdy characters waiting for the Hood Canal bridge to open



Ernie checking for sharks



Leader Bob looking after his flock of bikes while stuck on the bridge



Arriving at Mike's BBQ in Port Gamble



One of three cruise ships that our ferry captain played "dodge-em" with when returning to Edmonds

Thanks to Ron Johnson for some of these photos. Some of the pictures for this ride report were taken by a Go-Pro™ camera mounted on the handlebars which was automatically shooting a photo every 30 seconds during the ride. The rather tiny Go-Pro camera can shoot both video and still photos and can be mounted to helmets, windshields, and virtually any smooth surface.

WA District Rally 2011: AKA "The Rodeo"

By Bill Estes

This was our third District Rally that Caryl and I have been to. It was a "Blast". There were many of our Chapter "E" members there. We arrived Thursday afternoon and started setting up our tent and camping equipment (really our daughters stuff). Since we don't camp much (twice now in 39 years of marriage and both times at a District Rally}. We learned much from our previous rally and borrowed a larger tent. I learned another lesson. Make sure the ground is level. The first night we were on a slight slope and kept rolling off the air mattress. Fixed that the next morning!

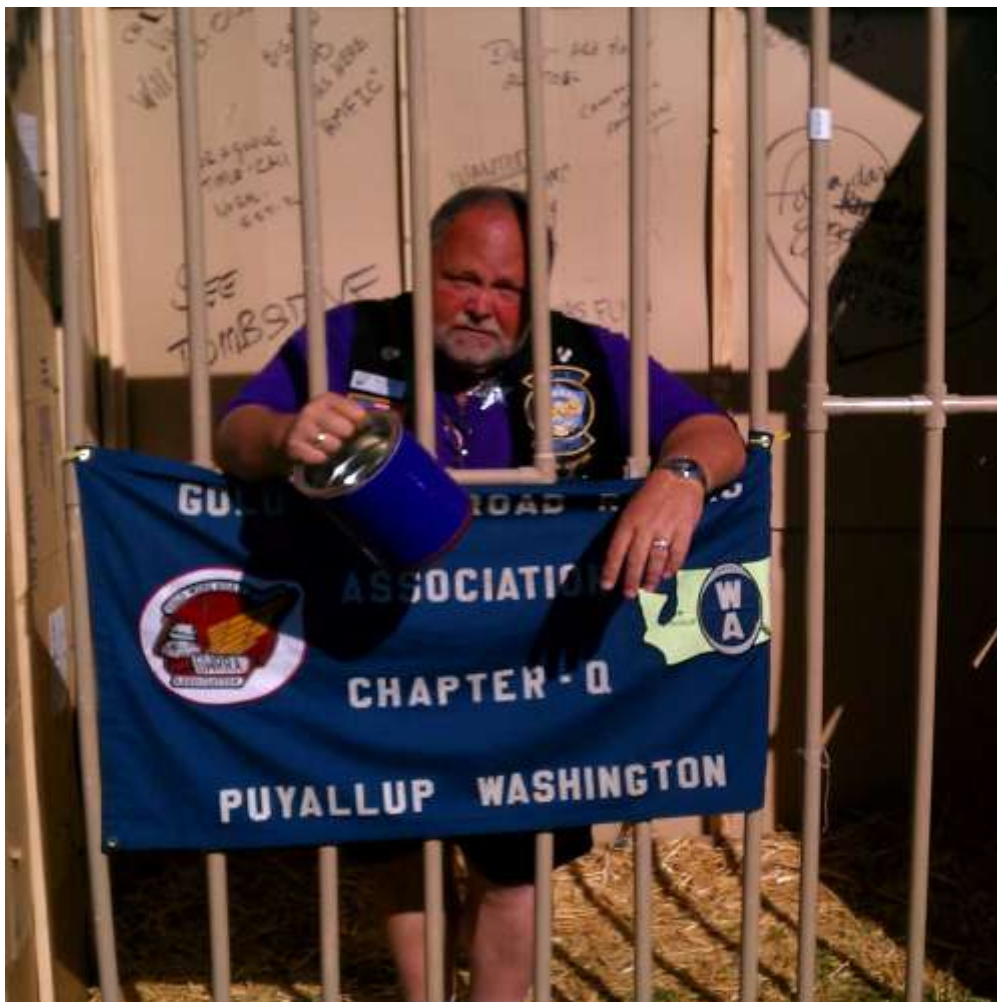


We did not bring cooking gear but Mike and Lynn Keefe had brought their "Luxury" motor home and had some leftovers from eating at a Chinese Restaurant the night before. Thank you Lynn & Mike. Mike was cooking steaks for themselves and John and Barb and Maddie who was our Chapter "E" mascot, who were invited to stay in the "Luxury" motor home with them at the Rally. They made some interesting remarks the next morning about hoping that when the "air conditioning or heater" came on during the night, that it didn't bother us too much. Every night usually around midnight, you would hear and feel the freight trains rumbling through town then sounding their horns at every crossing. This continued about every 15 to 20 minutes all night long until dawn. We were starting to get used to it by the third night. No, with the other noise going on all night and the ground shaking, we did not hear the AC or heater come on. LOL. The weather was great and not a problem. It did rain a bit Thursday morning but cleared up that afternoon and was great for the rest of the weekend. Our camp was divided into two rows. The first row was three motor homes all lined up (The High Rent District) and on the other side (Low Rent District) were those of us who were in tents and camp trailers. Every morning when we got up the first thing you saw was Mike and Lynn's "Luxury" motor home. (Can you say, "Motor Home Envy"!!!)



Every morning Patty Spencer made pots of coffee to help us wake up before having breakfast. Friday morning Lana and Ron Peck make breakfast of biscuits and gravy for us and it was great. Thank you Lana & Ron! We also found out the there was a food vendor at the Fair-grounds that was open early to late and had great "Fair" food. **We ate there several times**

Now back to the Rally. Bob, Patty Spencer, were the District Directors for the Rally and did a great job of making sure that all the attendees had a great time with a well run event. Thank you all for the great job. They had to spend a lot of time making sure everything ran well and the District Staff did a great job. There were lots of things to do during our three days there. We had many vendors in one of the barns to help us get more chrome and goodies for our bikes and others who offered different wares. It was a good mix and we did spend some money at the vendor area. There were several motorcycle runs, Bike judging and other **things to do. Some of the "Sheriffs would arrest us and put you in "Jail" for any perceived violation and you had to pay your bail or have someone else do it to get out. The money went for charity.**



There was western dancing and some classes before to help non dancers learn some of the steps. Karaoke was a hit. We had a great dinner on Saturday night provided by our WA District followed by the "Talent Show" . **Three chapters took part. Chapter "B" won. Congratulations to them. We had a "Light Parade" and drove our bikes around Chehalis and then had an "Ice Cream Social" when we got back. Lots of fun! There was even a judging of the "Best lighted bike" which was very bright and colorful.**

Now for the good stuff! Each night as the sun went down we would come back to the campsite and gather around the Campfire and have a good time going over the **events of the day. There was some singing of adult camp songs which I can't go into** at this time. A good time was had by all. We were warmed by the camaraderie of friends and some liquid libations (enough said on this). What happens at the Rodeo stays at the Rodeo. Mike Keefe took a lot of pictures of the Rodeo and they are up on the chapter website for your viewing pleasure.

Bob & Patty Spencer had retired as District Directors Saturday night, as well as John & Barb Smith as Assistant District Directors. Now we have then back to being **full time Chapter "E" members. Welcome back.**

Finally, all good things must come to an end. After breakfast Sunday morning it was time to go home. We broke camp, packed up our stuff, said goodbye with lots of **hugs and handshakes and headed on home. We are looking forward to next year's rally and meeting up with everyone again.** If you missed the rally, we are sorry if you did, please come join us next year for more great times.



Caring for your Windshield

By: Gordon Bousman

Some riders may wonder about what is the best way to care for your motorcycle plastic windshield. **First, never clean your windshield with Windex™** - it was never designed to clean plastic and may result in fine scratches on your windshield. When you use Windex or other ammonia based cleaning solutions, it tends to soften the outermost layer of plastic which then promotes scratches and pitting. Most stock Goldwing windshields are made of hard coated polycarbonate and some aftermarket windshields are made of Lexan™ for which Windex promotes even more damage.

Even though you might be in a hurry when refueling your bike at a service station, never ever use one of those quick wash windshield scrubbers or squeegees. They are usually loaded with fine pieces of grit and the odds of scratching your windshield are high. The same logic applies to the paper towels found near gas pumps, they are made of recycled paper and are moderately abrasive. Household paper towels are not ideal for windshield cleaning either; they are also made from recycled paper and can be somewhat abrasive. **It's best to carry your own windshield cleaning materials on your bike such as a micro-fiber cloth (preferred) or other soft cloth plus one of the cleaning solutions mentioned below.**

Washing your windshield with mild soapy water while washing your bike is just fine. However between bike washes, one of the better rated windshield cleaners is All Kleer™ which has been specially formulated to clean plastic windshields on motorcycles (variations on the product are sold for aviation and boat use). All Kleer leaves a thin coating on the windshield that helps repel dust and helps rain bead up (never use RainX™ on your bike windshield, it was not designed for polycarbonate plastic and will damage it). All Kleer seems to fill in very fine micro scratches and make them disappear, it will also aid in the removal of grease and bugs. An 8 ounce bottle of All Kleer sells for about \$8 at www.jpcycles.com or other online dealers (make sure that you order the motorcycle formula, not the aviation or boat versions). I keep a bottle in my bike at all times for windshield cleaning while on the road, it seems to last a long time. All Kleer when used on helmet visors can assist in reducing fogging.



Windshield Cleaner products

Another option for windshield cleaning is Plexus™ which comes in an aerosol can and is highly rated. It's a bit pricey however; a 7 ounce can is \$15 at Amazon.com. 210 Plastic Cleaner/Polish™ (\$12 for 14 ounce bottle at Amazon) is a good alternative to using All Kleer or Plexus for everyday windshield cleaning. Still another windshield cleaning product is Plas-Tec cleaner which comes in a pump spray bottle. A 16 oz. bottle is about \$10 from www.aircraftspruce.com or various motorcycle online dealers. It is rated as safe for polycarbonate and Lexan. You can also clean your helmet face-shield with the above products as well.

SCRATCH REMOVAL

Inevitably, we all get some minor scratches on our windshields over time that we would like to remove (read "minor", deep scratches require professional support). It is annoying to look through a windshield that has fine scratches particularly when there is glare from oncoming headlights at night. However any attempts to remove windshield fine scratches should be approached with a bit of caution as some scratch removers are not designed for use on OEM or Lexan™ windshield material.

One of the better solutions for light windshield scratches is 210 Plus Plastic Scratch Remover™ sold by www.aircraftspruce.com, a 15 ounce bottle sells for about \$10. It will likely remove fine scratches on a first application however a second application may be necessary if the scratches are slightly deeper. It is rated as being safe for use on Lexan™ and Plexiglas™.

Novus makes a 3-part scratch remover kit that sells for about \$20 or a single application fine scratch remover for about \$9, both available at Amazon.com.

Meguiars Mirror Glaze #10 Clear Plastic Polish (non-abrasive formula) is reported to be safe for use on polycarbonate plastic for minor scratch removal and can be followed up with its #17 Clear Plastic Cleaner. Both together are available at Amazon.com for about \$22.

THE NOT SO GOOD

Meguiar's PlastX™ should only be used with caution, it is not recommended for polycarbonate or Lexan materials. Another rather new product that is not recommended for use on OEM polycarbonate windshields is Slip Streamers Motorcycle Heavy-Duty Scratch Remover; it is not intended for use on Lexan or poly carbonate windshields and I would recommend staying away from this product. It's best to know which type of plastic your windshield is made of and match that to the scratch remover product before making any attempts to remove scratches.



139308-01

SEPTEMBER

Sun	Mon	Tue	Wed	Thu	Fri	Sat
				1 <i>Thursday</i> <i>Social:</i> <i>6:00 PM</i> <i>Pizza Bank</i> <i>Kirkland</i>	2 WA-B Ocean Campout Idaho District Rally	3 WA-B Ocean Campout Idaho District Rally
4 WA-B Ocean Campout Idaho District Rally	5 WA-B Ocean Campout LABOR DAY	6	7	8 <i>Thursday</i> <i>Social:</i> <i>6:00 PM</i> <i>Canyons</i> <i>Bothell</i>	9	10 WA-Y Riddler Run
11 <i>Ride for Kids</i> <i>Carnation</i>	12	13	14	15	16 <i>WA-E Ride to Whistler</i> <i>WA-P Oyster Feed</i>	17 <i>WA-E Ride to Whistler</i> <i>WA-P Oyster Feed</i> <u>NO CHAPTER -E MEETING THIS MONTH</u>
18 <i>WA-E Ride to Whistler</i> <i>WA-P Oyster Feed</i>	19 <i>WA-E Ride to Whistler</i>	20	21	22 <i>Winter</i> <i>Social:</i> <i>CoHo Café</i> <i>Redmond</i>	23	24
25 <i>Anacortes Oyster Run</i> 	26	27	28	29	30	



GWRA Happenings



*** WASHINGTON CHANGES ***



WA-I New Meeting Place and Time: 8AM Breakfast 8:30 AM Meeting
Fatsos Bar and Grill
3205 Martin Way E.
Olympia, WA

WA Z *New meeting day and time:*
2nd Saturday, 1:00 PM

PJ's Pizza, 1232 Alder St. Centralia, WA

2011 Calendar of Events



September

- Sep 2-4 Idaho District Convention, Kamiah, ID
- Sep 10 WA-Y Riddler Run Ride, Buckley, WA
- Sep 11 Ride for Kids, Carnation, WA
- Sep 16-18 WA-Y Oyster Feed, Long Beach, WA
- Sep 16-19 WA-E ride to Whistler, BC
- Sep 25 Oyster Run, Anacortes, WA (www.oysterrun.org)

Idaho District Convention

September 2, 3, 4, 2011

Come and get a piece of the ROCK



Lewis and Clark Resort, 4243 HWY 12, Kamiah, Idaho 83536

Rally Headquarters, M/C and R/V Camping on Sight

Make Reservations: Lewis and Clark Resort for Rooms, Cabins and Camping - 208-935-2556

Clearwater 12 Motel for Rooms only (in Kamiah) 888-935-2826

Rider Name _____ Member# _____ Chapter _____

Co-rider Name _____ Member# _____ Chapter _____

Position currently held in GWRRA, if any: _____ Tele. # _____

Mail Address: _____, E-Mail: _____

City _____, State _____ Zip _____ No. of direct miles to Rally _____

Note: All checks must be drawn on U.S. banks in U.S. currency. MO's in U.S. currency are OK.

Advanced Pre Registration – Post marked by July 1, 2011

Member and Life Member	\$ 20.00 X _____	+ \$ _____
Non-member	\$ 25.00 X _____	+ \$ _____
BBQ Country Style Ribs	\$ 13.00 X _____	+ \$ _____

After July 1, 2011 - Registration

Member and Life Member	\$ 30.00 X _____	+ \$ _____
Non-member	\$ 35.00 X _____	+ \$ _____
BBQ Country Style Ribs	\$ 15.00 X _____	+ \$ _____

Pre-registration 50/50 (Must be present to win)	\$ 1.00 X _____	+ \$ _____
--	-----------------	------------

Grand Prize Tickets (Must be present to win)	\$ 1.00 X _____	+ \$ _____
--	-----------------	------------

T-Shirt Sales Total	+ \$ _____
----------------------------	------------



T-shirt, Short Sleeve

Small	\$15.00 x _____	= \$ _____
Medium	\$15.00 x _____	= \$ _____
Large	\$15.00 x _____	= \$ _____
X Large	\$15.00 x _____	= \$ _____
XX Large	\$15.00 x _____	= \$ _____
XXX Large	\$17.00 x _____	= \$ _____

T-shirt, Long Sleeve

Small	\$17.00 x _____	= \$ _____
Medium	\$17.00 x _____	= \$ _____
Large	\$17.00 x _____	= \$ _____
X Large	\$17.00 x _____	= \$ _____
XX Large	\$18.00 x _____	= \$ _____
XXX Large	\$19.00 x _____	= \$ _____

Grand Total Enclosed Check # _____ \$ _____

Please make checks payable to "GWRRA Idaho District". Mail to: DON WEBER, 381 S. Ponderosa Loop, Post Falls, Idaho 83854 208-660-7836 or SHARON WEBER 208-660-7839

Agreement: I/We the undersigned agree to comply with the rules governing this event. I/We hold harmless GWRRA, its officers, representatives, and event sponsors, for the loss or injury to personal property. I/We have read and understand this form.

Rider (signature) _____ Date _____ Co-rider (signature) _____ Date _____



C
H
A
P
T
E
R
Y



RIDDLER RUN

September 10, 2011

344 N River Ave
Buckley, WA
(GPS: 47.166280, -122.025496)

**Registration Begins
8:00 am**

First Bike Out 9:00 am
Last Bike In 2:00 pm



**Grand Prize
\$100**

Other Prizes Also Awarded

Thank You to Our Sponsors

SOUTH BOUND HONDA
27824 96th South
Lakewood, WA
253-852-2288

CRAZY LARRY'S
3016 Durango Street SW
Lakewood, WA
253-588-8155

Registration: Rider \$15 Co-Rider \$5

Registration includes a light breakfast and lunch

REGISTRATION FORM

Make Checks Payable
to: GWRRRA Chapter Y

Mail pre-registration
to:

Winter Taylor
29212 333rd Ave SE
Ravensdale, WA
98501

Rider: _____ Co-Rider: _____
Address: _____ Address: _____
City: _____ Zip Code: _____ City: _____ Zip Code: _____
E-mail Address: _____ Affiliation: _____

I hereby agree to comply with the ideas governing this run and I further agree to hold harmless the GWRRRA and any property owner or owners for any loss or injury to self or property in which I may become involved by reason of participation of this run. I do also agree to assume responsibility for any property damage, which I may unknowingly cause. I understand that I am responsible for my own insurance.

Rider Signature _____ Co-Rider Signature _____



17th Annual Chapter "P" Oyster Feed

September 16, 17, 18, 2011

Wildwood R.V. Park & Campground

5411 Sandridge Road

Long Beach, WA

(7/10 MILE NORTH OF THE LIGHT @ HWY 101 & SANDRIDGE ROAD)

Campground Reservations for ALL NIGHTS through Chapter-P not Wildwood RV Park

PLEASE PRINT

GWRRRA Member Number _____ State-Chapter (Ex: WA-P) _____

Rider _____ Co-Rider _____

Address _____ City _____

State _____ Zip Code _____ Phone Number _____

E-Mail Address _____ Yes, send me next year's registration form by email

Pre-Registration Postmark by September 1st

GWRRRA Member	\$15.00X	= \$
Non-Member	\$20.00X	= \$
Pre-Registration 50/50	\$1.00X	= \$
Breakfast Tickets	\$6.00X	= \$

Postmark After September 1st

GWRRRA Member	\$20.00X	= \$
Non-Member	\$25.00X	= \$
Breakfast Tickets	\$6.00X	= \$
Day Pass (Saturday)	\$15.00X	= \$

Thursday Night Arrival (Reservations through Chapter-P)

Tent Camping (Field Only per night)	\$10.00X	= \$
Tent Site (Fire Pit & Table per night)	\$15.00X	= \$
Tent with Electric (per night)	\$20.00X	= \$
R.V. NO Hook-Up (per night)	\$15.00X	= \$
RV Full Hook-Up (per night)	\$22.00X	= \$

MUST REGISTER BY SEPTEMBER 1ST for RV Full Hook-Up

20 AMP or 30AMP Service

Grand Total: _____

Make checks payable to "GWRRRA Chapter P"
Send to: Chuck Porter
117 Scott St.
Longview, WA 98632
(360) 636-0519

Host Motel

OUR PLACE
at the **BEACH**

(800) 538-5107

See attached flyer for room rates.

I/We agree to fully comply with the rules that govern this event. I/We further agree to hold harmless the GWRRRA its Officers, Representatives, and Persons sponsoring this event for any loss or injury to myself, family or property during participation in this event.

Rider: _____ Date: _____ Co-Rider: _____ Date: _____

2011 R A L L I E S / C O N V E N T I O N S

OREGON

June 16, 17 & 18 2011

Joseph , Oregon

Wyoming

June 16, 17 & 18 2011

River ton, Wyoming

Wing ding 33

July 6, 7, 8, & 9 2011

Knoxville , tennessee

Washington

July 21, 22, & 23 2011

Ch e h a l i s f a i r g r o u n d s

Ch e h a l i s , W a s h i n g t o n

Montana

July 28, 29 & 30 2011

Helena , Montana

Region I

August 4, 4 & 6 2011

Driggs, Idaho

Idaho

September 2, 3 & 4 2011

Kamiah , idaho

GWRRA WASHINGTON MEETINGS

4th Saturday	8:30AM	A-Seattle	Old Country Buffet, 25630 104th Ave. SE, Kent, WA 98030
1st Sunday	8:30 AM	B-Bremerton	Bremerton Eagles, 205 6th St., Bremerton, WA 98337
2nd Saturday	8:00 AM	C-Everett	Denny's, 132 128TH St. SW, Everett, WA 98204
2nd Sunday	8:30 AM	D-Aberdeen	Duffy's Restaurant, 1605 Simpson Ave, Aberdeen, WA 98520
3rd Saturday	08:30AM	E- Bellevue	Crystal Creek Café, 22620 Bothell-Everett Hwy. Bothell, WA. 98021
2nd Tuesday	6:30 PM	H-Lynden	Fairway Restaurant, 1726 Front St, Lynden, WA 98264
3rd Sunday	8:30 AM	I -Olympia	Fatsos Bar and Grill 3205 Martin Way E. , Olympia, WA
2nd Saturday	9:00 AM	L-Kennewick	Sandstone Café 104 W. 1st. Kennewick, WA 99336
1st Saturday	12:00 PM	M-Yakima	Legends Casino 580 Fort Road Toppenish, WA
3rd Sunday	8:30 AM	N-Spokane	Golden Corral Restaurant, 7117 N Division, Spokane, WA 99208
4th Saturday	8:00 AM	O-Port Orchard	Airport Diner, 8803 State Hwy 3 SW, Port Orchard, WA 98367
3rd Saturday	1:00 PM	P-Longview	Sizzler, 936 Ocean Beach Hwy.,Longview, WA. 98632
1st Friday	7:00 PM	Q-Puyallup	Hangar Inn, 16919 A Meridian E, Puyallup, WA 98372
1st Saturday	9:00 AM	R-Walla Walla	Oasis Restaurant. Old Milton-Freewater, OR 97862
1st Thursday	6:00PM	V-Auburn	Eagles Lodge . 702 M St. S.E. , Auburn, WA 98002
1st Saturday	8:30 AM	X-Vancouver	Hometown Buffet, 7809 B NE, Vancouver, WA 98686
2nd Friday	6:30 PM	Y-Enumclaw	Krain Corner Restaurant, 39929 264th SE, Enumclaw, WA 98022
2nd Saturday	1:00 PM	Z-Centralia	PJ's Pizza, 1232 Alder St. Centralia, WA 98531

NEW

Chapter E Staff

Chapter Directors

John & Barb Smith

Store Managers

Ron & Kathy Johnson

Treasurers

Jim & Karen Roberson

Ride Director

Bob Spencer

Mileage Coordinators

Karla & Scott Edwards

Assistant Chapter Directors

Bob & Carolyn Reagle

Bill & Caryl Estes

Chapter E Educator

Ron & Lana Jo Peck

Historians/Photographers

Ron & Lana Jo Peck

Chapter Greeter

Ron & Violet Urghart

Newsletter Editors

Gordon & Kathy Bousman

Membership Coordinator

Violet Urghart

Web Designer

Ron Peck

Cares & Concerns

Ernie & Sue Sigyar to

Dinner Socials Coordinators

Bill & Caryl Estes



Bellevue, WA

**Together, we
can make
a difference!**



Region I Staff

<http://www.bigskyregioni.org/>

Gold Wing

Road Riders

Association

www.gwrra.org/

Mike Stiger

Director

Region Directors Mike and Peggy Hudnell

Assistant Directors Dale and Shirley Dufner

Assistant Directors Terry and Cheri Huffman

Rider Educators Tony van Schaick

Instructor Coordinators Tim and Marie Michelle

Motorist Awareness Dave and Sheila Chavez

Treasurer Erv and Phyllis Granahan

Membership Enhancement Coordinator Carmen Weakland

Leadership Trainers John and Diane Kester

Region I Ambassadors Tom and Mozelle Edwards

Region I Ambassadors Hank and Marilyn Smith

Couple of the Year Coordinators Dan and Carmen Weakland

Couple of the Year Larry and Barbara Kuzma

Webmaster Scott Bowman

Newsletter Editor Shirley Dufner

Washington District Staff

<http://www.gwrra-wa.org/>

WA District Directors Susie & Frank Hutchinson

Asst. District Directors Reggie Baumer and

Chuck Porter

Asst. District Directors Wally & Anna Wallingford

District Trainer - TBD

District Treasurer - TBD

Membership Coordinator—TBD

District Rider Educator Bob Minor

Asst. Rider Educator Tom Denny

Asst. Rider Education Randy & Debby Reid

District Ambassadors—TBD



District Stores - TBD

District Webmaster - TBD

District Couple of the Year

District I OY/COY Coord. - TBD

District Newsletter Editor - TBD





Serving North America's Families since 1972
PRE-PAID LEGAL SERVICES, INC.
 AND SUBSIDIARIES

**Bill Estes
Caryl Estes**
 Bronze Executive Directors
 Independent Associates
 Small Business & Group Benefits Specialists

Office 425-821-7441
 Toll Free 866-231-3727

williamestes@prepaidlegal.com
www.theestesgroup.biz



For More Information
 Please Call or Visit Our Website
www.theestesgroup.biz
 NYSE - PPD



Everett Powersports
Minutes Away . . . Miles Ahead

(425) 347-4545 (800) 735-7031

215 S.W. Everett Mall Way
 Everett, WA 98204

Cookie Lee Fine Fashion Jewelry
 Home & Office Shows
 Career Opportunities
 Fundraisers

Charlene Lee (206) 595-7070
 Independent Jewelry Consultant CookieCharlene@comcast.net
www.cookielee.biz/CharleneLee

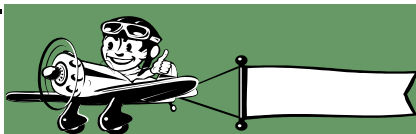
Sit & Stitch Quilting

Penny Rosenow
 362545 SE 47th CT.
 Fall City, WA 98024
 (425) 222-5910

wwwfpgr@comcast.net

Embroidery & Classes

Penny can do T-Shirts, Jackets & Windshield covers. Just send email or call to place order.



Advertise with us
 Corporate: \$100.00 per quarter.
 Medium (1/2 pages): \$50 per quarter.
 Small (business card): \$25 per quarter

Rates above are per quarter. All interested companies should inquire with John Smith or Bob Reagle.

Rates above are per quarter. All interested companies should inquire with John Smith or Bob Reagle.



See us for all of your cellphone, satellite, security, local and long distance, and video phone needs










ACN
 Independent Representative
 Ron and Lana Jo Peck
 Team ID# 01967548
 Video Phone 425-908-7321
 Cell Phone 408-219-6495
 Email peck@acnrep.com
 Website <http://peck.acnrep.com>
 18111 110th Ave NE
 Woodinville, WA 98077

Ron and Lana Jo Peck
 425-908-7321
<http://peck.acnrep.com>
Why go anywhere else?